

ALL SHS, RHS & CHS SECTIONS ARE GRADE S355JR UNLESS NOTED OTHERWISE.

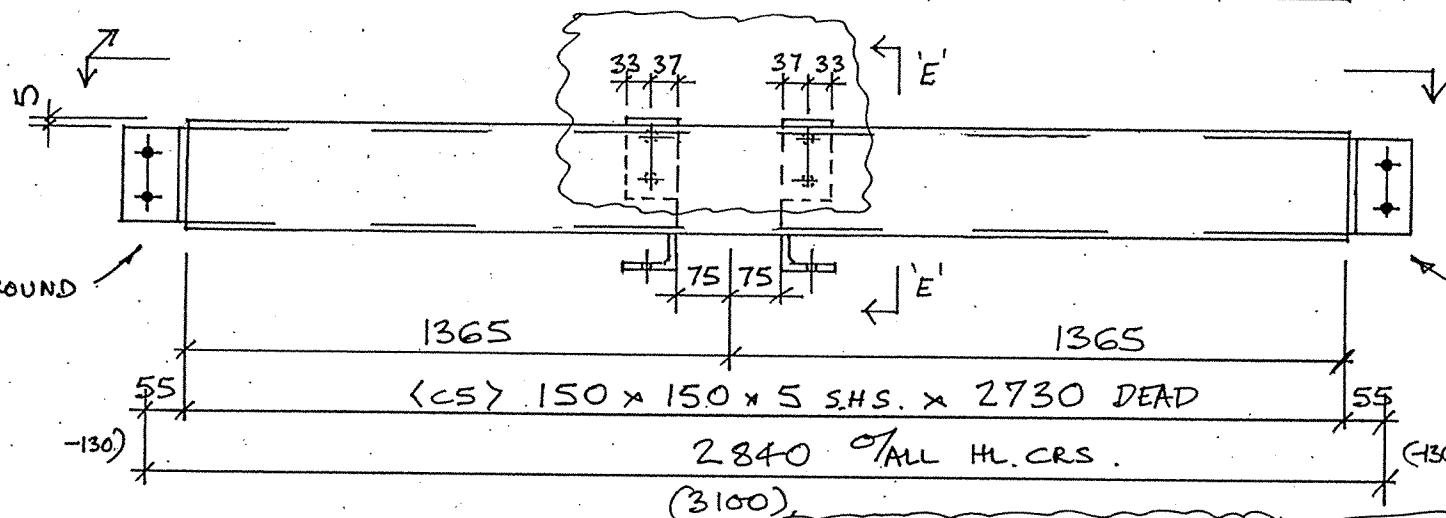
SITEWORK THIS STUB TO BE SHORTENED IN WORKS AS PER REV'D. DRAWING 07/18/67A

BKT 67/1  
G.F.W. ALL ROUND

ANY/ALL SITE WELDING TO L.COOPER STEEL STRUCTURE MUST BE DONE USING LOW HYDROGEN WELDING RODS (SUITABLY DRIED IN AN OVEN) OR SIMILAR

BKT 67/2.  
5 F.W. ALL ROUND

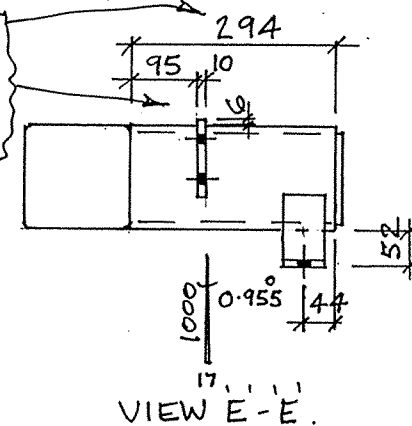
DETAIL A O E  
BKT 67/2



SITEWORK STUB REDUCED IN LENGTH TO LENGTH SHOWN & WELD EITHER SIDE 2N° TAB PLATES 202/1, G.F.W.

ONE N° REQ'D. THUS.

MKD 68/1



THIS WORK CARRIED OUT IN WORKS

LEONARD COOPER LIMITED

STRUCTURAL ENGINEERS  
REGISTERED OFFICE  
BAIN ROAD, HUNSLET  
LEEDS LS10 2JR  
TEL: 0113 2705441  
FAX: 0113 2760659  
REGISTERED No.  
167872 LONDON  
sales@leonardcooperltd.co.uk  
www.leonardcooperltd.co.uk

REVISION A.

REVISION B.

REVISION C.

REVISION D

REVISION E.

ZONE 7

FABRICATION TOLERANCES  
TO BS5950 PART 2 (U.N.O.)  
(SHOWN ON L.C. PROCEDURE  
M5-23)

CONTRACT: QUARMBY CONSTRUCTION  
WAKEFIELD WATERFRONT. BLDG 20

TITLE EAVES BEAM.

RELEASED FOR  
FABRICATION/ERECTION  
SCALE:

SIGNED:  
DATE:

DRAWN BY: *MB*  
CHK'D BY: *ISM*

DRG No: 07/18/SW18

SHOP BOLTS	4.6
FINISH	8.8
NO	OFF
TYPE	
DIA	
L'TH	
E.N.	
E.H.	

SHOP NOTES: (U.N.O.)  
ALL WELDS 6mm CONT. FILLET WELDS  
ALL STEEL TO BS EN 10025 GRADE S275JR  
PAINT SHOT BLAST TO SA 2.1 COAT  
C400 V3 TO 80 MIC D.F.T.

IDENTIFICATION MARKS MUST BE PLACED ON  
1) TOP RIGHT HAND END OF BEAMS/MEMBERS OR  
2) COLUMN WHERE INDICATED THUS: MARK

